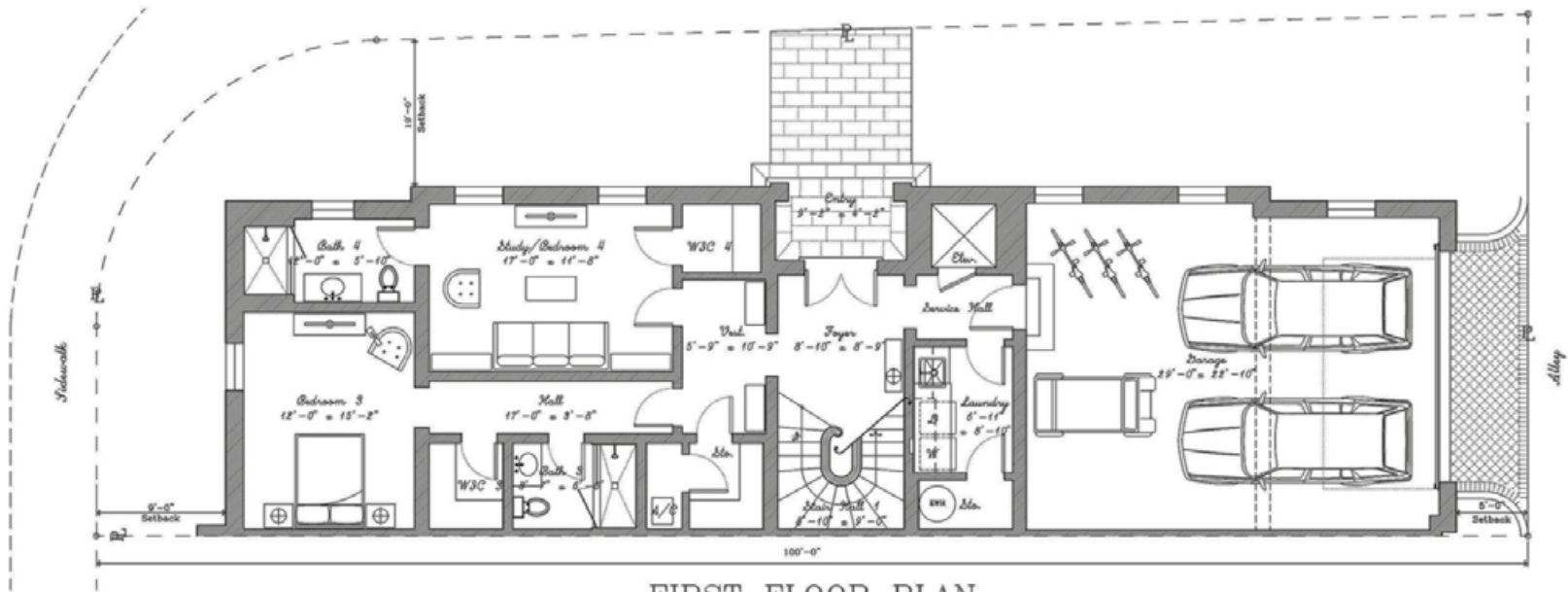


BEATRICE ROW

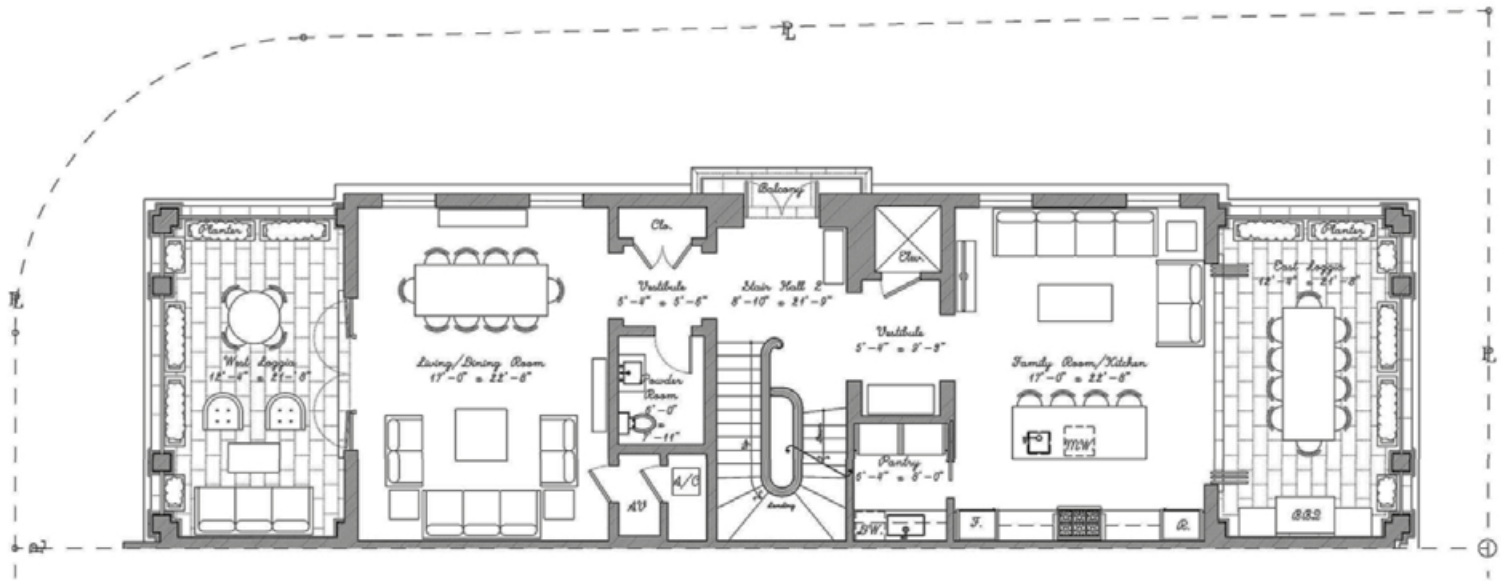
AT BILTMORE SQUARE

RESIDENCES 1 & 9



FIRST FLOOR PLAN

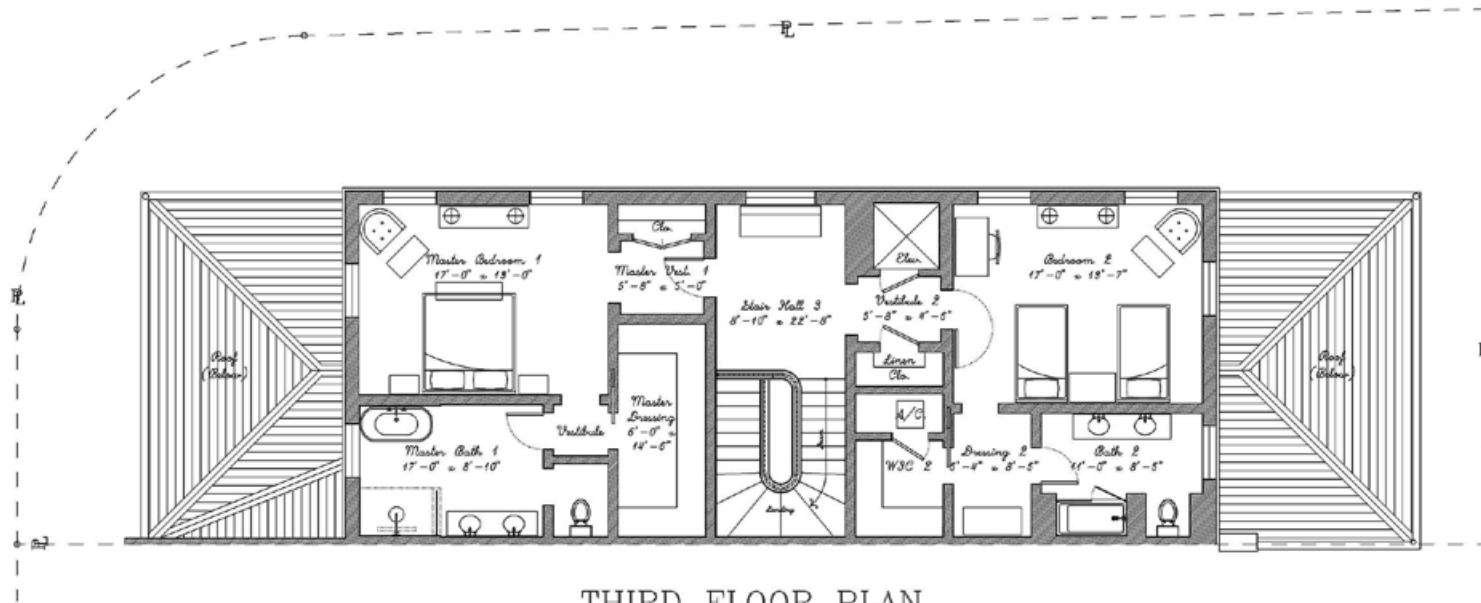
Scale 1/8" = 1'-0"



SECOND FLOOR PLAN

Scale 1/8" = 1'-0"

RESIDENCES 1 & 9



THIRD FLOOR PLAN
Scale 1/4" = 1'-0"

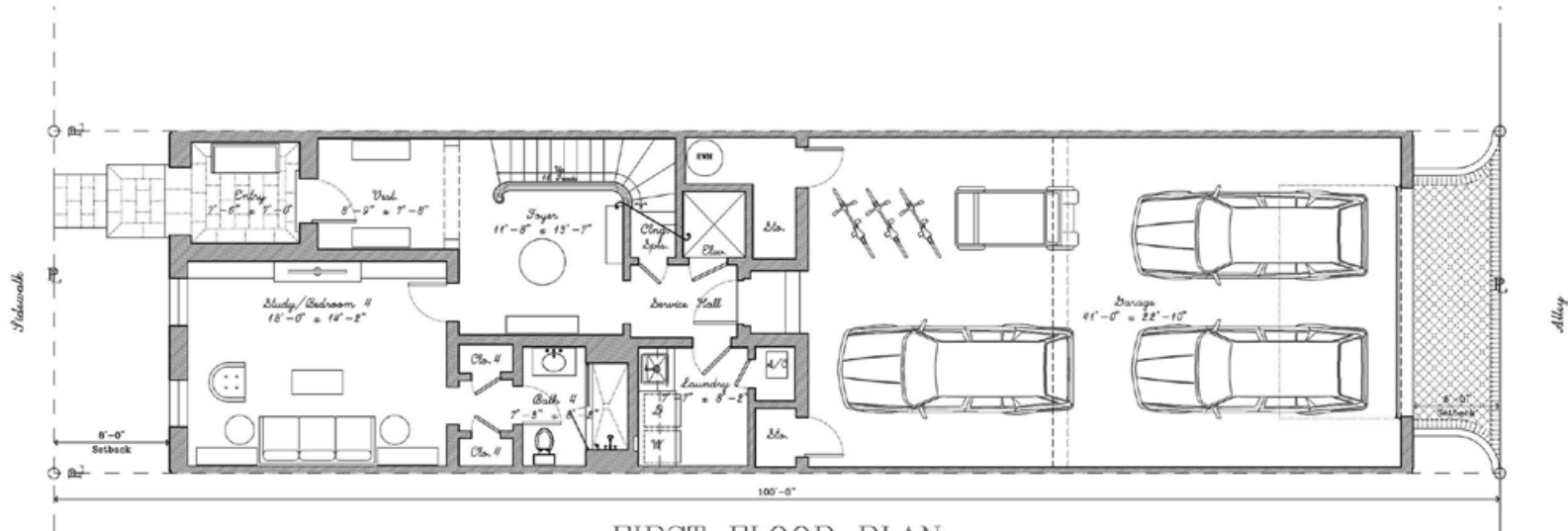
AC Space	4,132
Cov Terrace	674
Garage	731
Open Terrace	0
Total Sq.Ft.	5,537

Legal Disclaimer

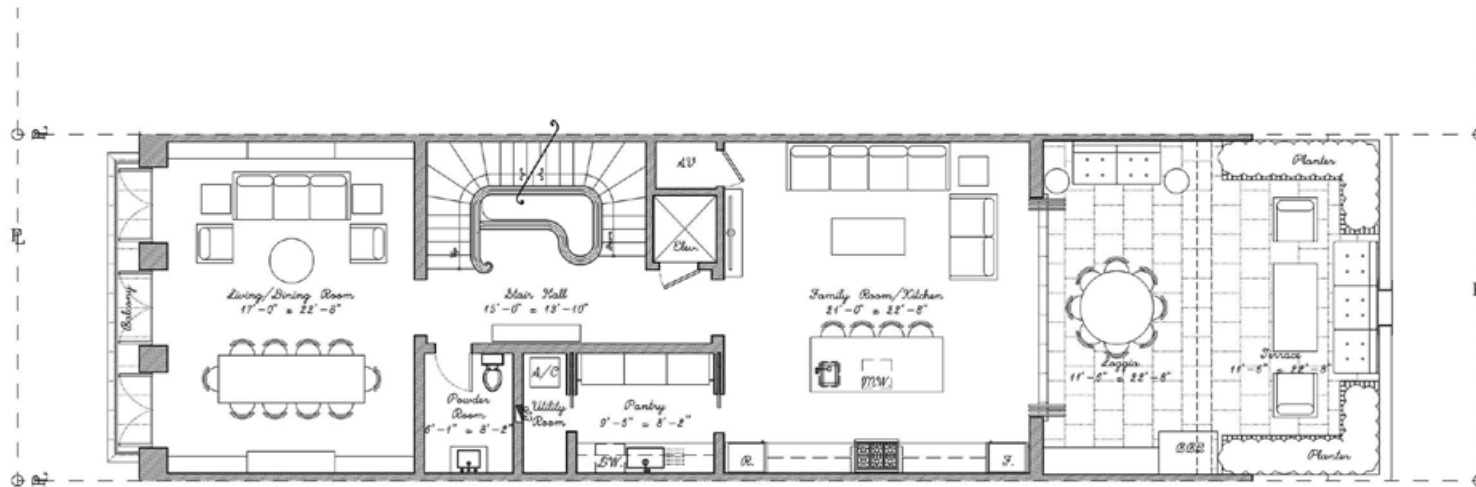
The drawings, specifications, dimensions, and other information in these floor plans are conceptual and for illustration purposes only and should not be relied upon. Reference should be made to the plans and specifications at Builder's office for accurate detailed information of the floor plans including calculation of square footage, dimensions, and other information.



RESIDENCES 3 TO 7

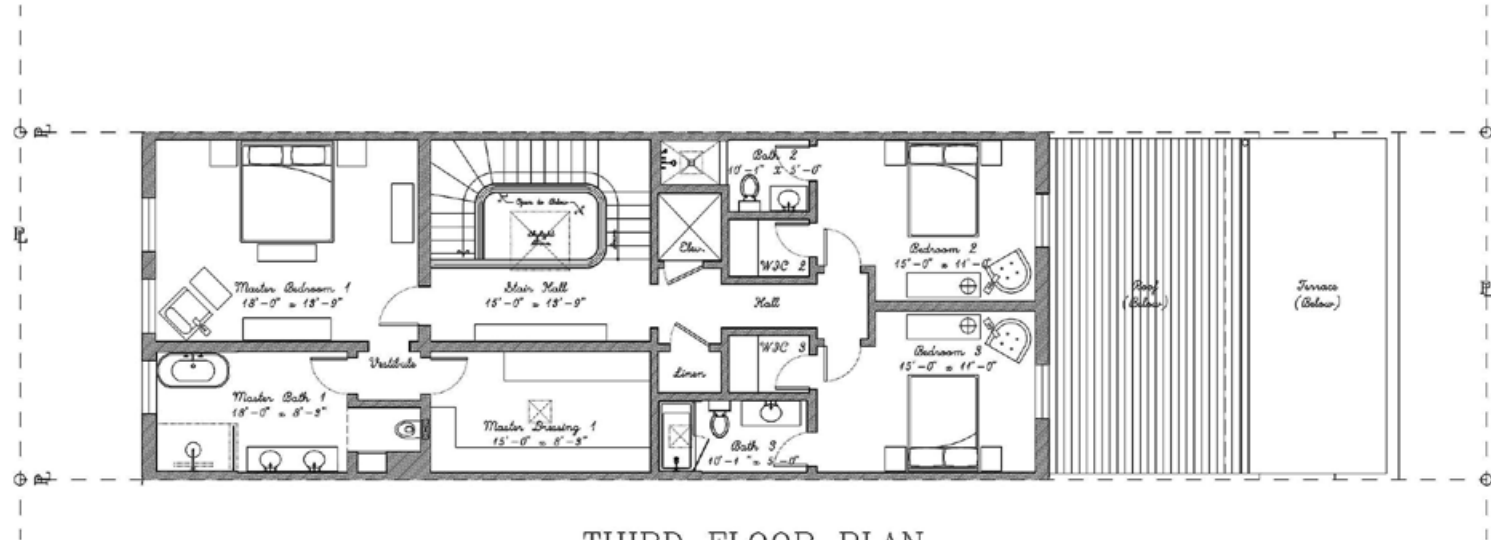


FIRST FLOOR PLAN
Scale 1/8" = 1'-0"



SECOND FLOOR PLAN
Scale 1/8" = 1'-0"

RESIDENCES 3 TO 7



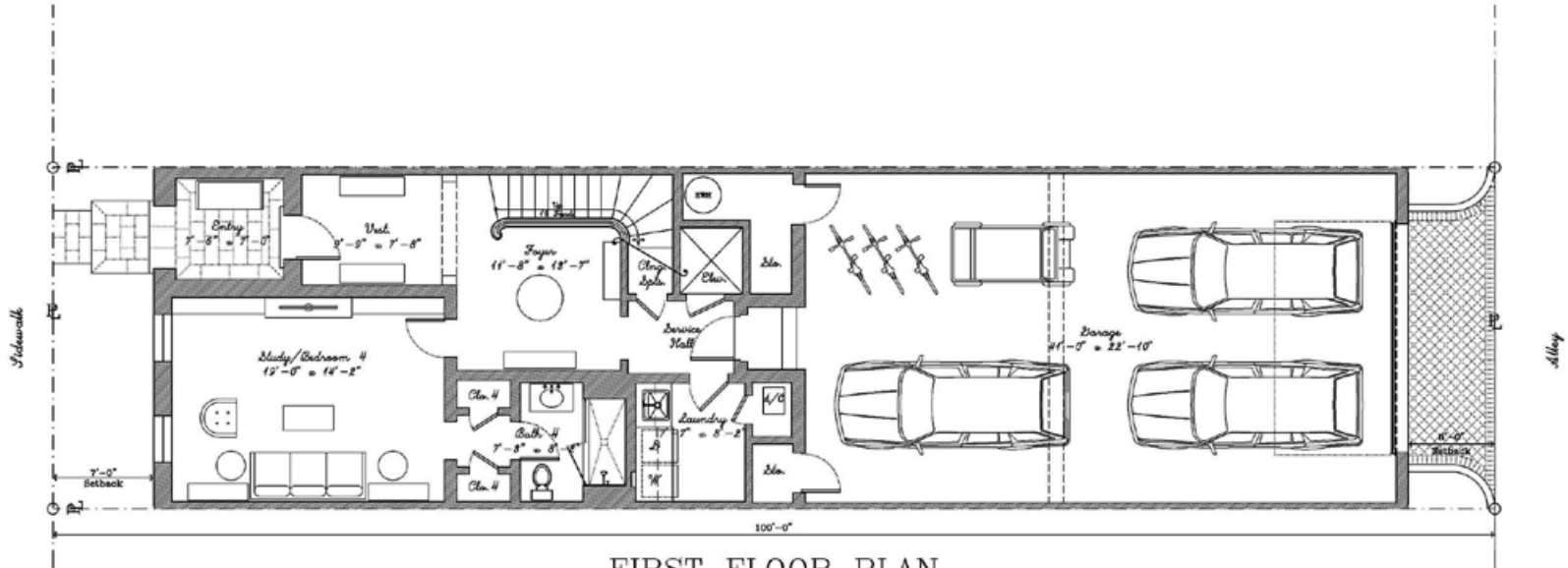
THIRD FLOOR PLAN
Scale 1/8" = 1'-0"

AC Space	3,781
Cov Terrace	354
Garage	1,084
Open Terrace	345
Total Sq.Ft.	5,564

Legal Disclaimer

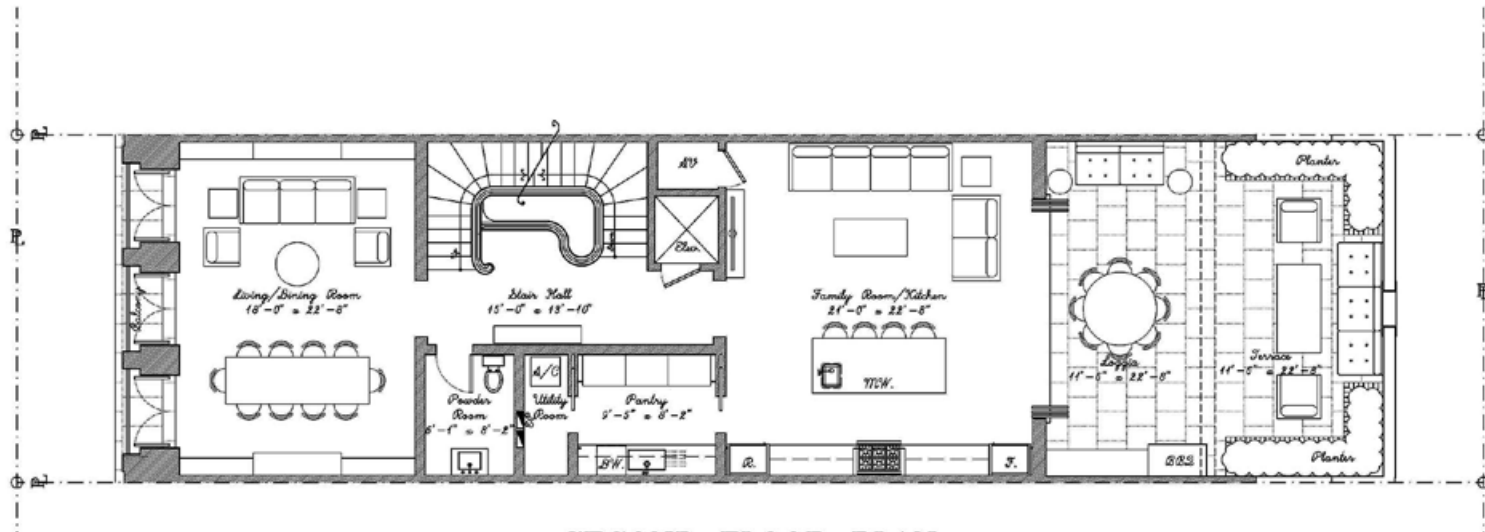
The drawings, specifications, dimensions, and other information in these floor plans are conceptual and for illustration purposes only and should not be relied upon. Reference should be made to the plans and specifications at Builder's office for accurate detailed information of the floor plans including calculation of square footage, dimensions, and other information.

RESIDENCES 2 & 8



FIRST FLOOR PLAN

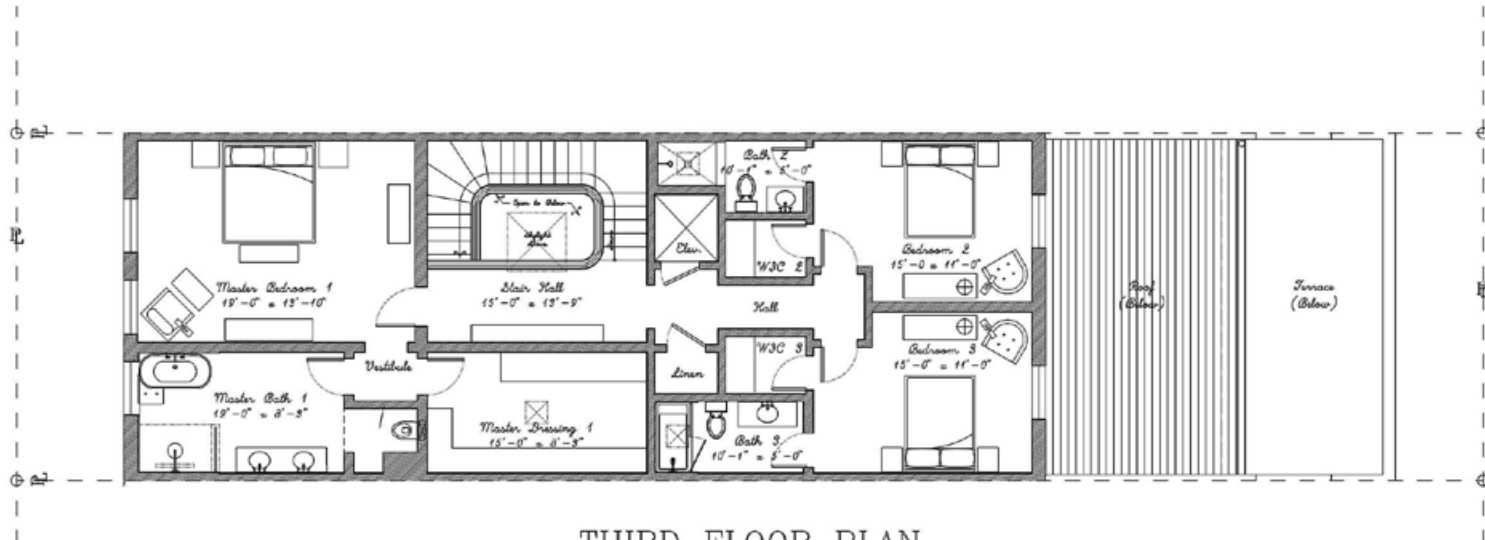
Scale 1/4" = 1'-0"



SECOND FLOOR PLAN

Scale 1/4" = 1'-0"

RESIDENCES 2 & 8



THIRD FLOOR PLAN
Scale 1/8" = 1'-0"

AC Space	3,853
Cov Terrace	354
Garage	1,084
Open Terrace	345
Total Sq.Ft.	5,636

Legal Disclaimer

The drawings, specifications, dimensions, and other information in these floor plans are conceptual and for illustration purposes only and should not be relied upon. Reference should be made to the plans and specifications at Builder's office for accurate detailed information of the floor plans including calculation of square footage, dimensions, and other information.

