



BEATRICE ROW  
TOWNHOMES

*"Unique Town Homes Row."*

EXCLUSIVE LIFESTYLE



## CLASSIC EUROPEAN REMINISCENCE

*Beatrice Row is the ideal luxury home in Miami, because of its remarkable location; its refined architectural details and finishes; its design that features magnificent living spaces; and its sensitivity to its historical context and tropical climate.*

*Designed by an international award-winning team, which drew the inspiration for their design from the most elegant and fashionable Georgian town homes in London, New York, and Boston.*

*The row is made up of nine beautiful, individual town houses, which together form an extraordinary timeless façade.*

# WELCOME HOME

*"A classic is a book that doesn't have to be written again."*

W. E. B. DU BOIS



## EXTERIOR

- OFF-WHITE BRICK BUILDING BASE
- ELEGANT CORAL STONE ARCHITECTURAL DETAILS
- CAST STONE CORNICE
- HAND CRAFTED BRONZE FINISHED BALCONY RAILINGS
- CLAY ROOF TILE MADE IN SPAIN
- EXTERIOR COPPER LANTERNS
- HIGH-END CGI HURRICANE RATED WINDOWS AND DOORS
- WIDE BI-FOLDING PATIO DOORS
- WOOD FRONT DOOR

## INTERIOR

- 13' CEILINGS IN THE LIVING ROOM AND DINING ROOM
- 11' CEILING IN THE FAMILY ROOM, KITCHEN AND BEDROOMS
- OPEN CURVING STAIR WITH CUSTOM MADE METAL RAILING, SKYLIGHT FOR ADDITIONAL NATURAL DAYLIGHT
- DECORATOR READY FLOORS
- PREMIUM WOOD TRADITIONAL DOORS 7 AND 8 FOOT HIGH
- DESIGNER DOOR HARDWARE
- ELEVATOR BY RESIDENTIAL ELEVATOR WITH DIFFERENT CAB FINISH OPTIONS, EASILY ACCESSIBLE FROM GARAGE AND KITCHEN
- ENERGY EFFICIENT AIR-CONDITIONING SYSTEM DIVIDED INTO ZONES
- GENERATOR OPTION ON ROOF
- SOUNDPROOFING WALL INSULATION FOR PRIVACY
- SMART-READY HOME

## KITCHEN & PANTRY

- ALL CABINETS IN KITCHEN AND PANTRY ARE CUSTOM-MADE
- WOOD LOWER CABINETS IN WHITE EUROPEAN OAK
- CARRARA MARBLE COUNTERTOPS
- DELUXE PROFESSIONAL STYLE REFRIGERATOR AND FREEZER
- 36" GAS RANGE AND BUILT-IN HOOD
- PULL OUT MICROWAVE DRAWER
- QUIET DISHWASHER
- UNDERMOUNT STAINLESS STEEL SINK
- COMMERCIAL STYLE PRE-RINSE FAUCET
- PLENTY OF ADDITIONAL STORAGE IN THE PANTRY
- WINE COOLER

## WALK-IN LAUNDRY

- DEEP LAUNDRY SINK
- DEDICATED AREA FOR DRIP-DRY CLOTHING

## TERRACES

- OPEN AND COVERED TERRACES WITH A BUILT-IN GAS OUTDOOR KITCHEN
- WIDE BI-FOLD DOOR SYSTEM THAT INTEGRATE THE TERRACES WITH THE FAMILY ROOM AND KITCHEN
- TERRACE PLANTERS FOR LANDSCAPING AND WALLS FOR PRIVACY



TOWNHOME I - UNITS 1 & 9

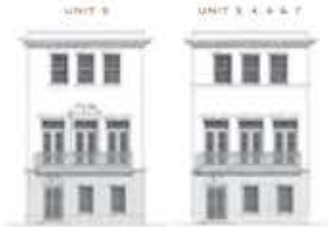


4 Bed, 4.5 Baths

AC SPACE 4,132 SQ FT  
TERRACE 674 SQ FT  
GARAGE 731 SQ FT  
TOTAL SQ FT 5,537 SQ FT

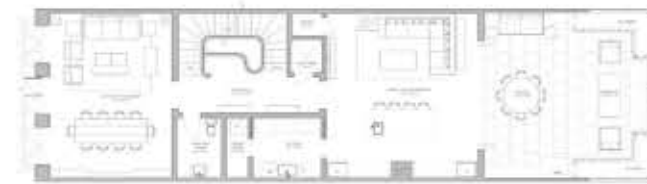


TOWNHOME II - UNITS 3 & 7



4 Bed, 4.5 Baths

AC SPACE 3,853 SQ FT  
TERRACE 354 SQ FT  
OPEN TERRACE 345 SQ FT  
GARAGE 1,084 SQ FT  
TOTAL SQ FT 5,636 SQ FT



TOWNHOME III - UNITS 2 & 8



4 Bed, 4.5 Baths

AC SPACE 3,781 SQ FT  
TERRACE 354 SQ FT  
OPEN TERRACE 345 SQ FT  
GARAGE 1,084 SQ FT  
TOTAL SQ FT 5,564 SQ FT



# LOCATION DICTATES ITS VALUE

The new three-story Beatrice Row is located in one exclusive residential-block in the historical Biltmore area of Coral Gables, which is emerging quickly as the new center in Miami for European stylish living. The town houses are about a 15-minute walk to the prestigious historic Biltmore Resort and Spa; a short driving distance to fine shopping and dining, and the downtown business district; and, they are conveniently located near the best schools and hospitals in the county. Just steps away are exquisite golf courses landscaped with 100-year-old Banyan trees.





OBTAIN THE PROPERTY REPORT AND DISCLOSURE SUMMARY REQUIRED BY THE FEDERAL LAW AND/OR STATE LAW AND READ IT BEFORE SIGNING ANYTHING. NO FEDERAL AGENCY HAS JUDGED THE MERITS OR VALUE, IF ANY, OF THIS PROPERTY. ORAL REPRESENTATIONS CANNOT BE RELIED UPON AS CORRECTLY STATING THE REPRESENTATIONS OF THE DEVELOPER. FOR CORRECT REPRESENTATIONS, MAKE REFERENCE TO THE DOCUMENTS AND/OR DISCLOSURE SUMMARY REQUIRED BY SECTION 720.401, FLORIDA STATUTES, TO BE FURNISHED BY A DEVELOPER TO A BUYER OR LESSEE.



This is not intended to be an offer to sell, or solicitation of an offer to buy, homeowner association units to residents of CT, IL, NY, NJ and OR, unless registered or exemptions are available, or in any other jurisdiction where prohibited by law, and your eligibility for purchase will depend upon your state of residency. Any sketches, renderings, graphic materials, plans, specifications, terms, conditions and statements contained in these materials or other brochures are proposed only with all improvements, designs and construction specifications subject to first obtaining the appropriate federal, state and local permits and approvals for same. Therefore such improvements, designs and construction specifications may change as a requirement of law. The Developer (as is defined herein below) reserves the right to revise or modify, in its sole and absolute discretion, any or all improvements, designs and construction specifications depicted and all terms, conditions and statements made. All of the drawings, rendering, and photographs provided by Developer are conceptual only and are for the convenience of illustrating a proposed development, said drawings, renderings and photographs should not be relied upon as representations, express or implied, of the final detail of the residences. All depictions of appliances, fixtures, counters, sinks, wall coverings, floor coverings, furnishings, closets, and other matters of detail, including, without limitation, items of finish and decoration, are conceptual only and are not necessarily the final finishes and details included with the purchase of a Unit. Consult your Purchase Agreement and the Plans and Specifications for information on what is included with Unit purchases. The photographs contained in these materials and other brochures may be stock photography, or may have been taken off site and are used to depict the spirit of the lifestyle to be achieved rather than any that may exist or that may be proposed, and the photographs are merely intended as illustrations of the activities and concepts depicted therein. No statements or representations have been made by Developer, or any of its agents, employees or representatives with respect to any potential for future profit, any future appreciation in value, investment opportunity potential, any rental income potential, the ability or willingness of Developer, or its affiliates, to assist any buyer in financing, renting (other than the residence of a voluntary rental program) or selling the Unit (except only in response to a direct inquiry from buyer), the economic or tax benefits to be derived from the managerial efforts of a third party as a result of renting the Unit or other units, or the economic or tax benefits to be derived from ownership of the Unit. The Developer, its agents, employees, and representatives are neither investment advisors nor tax advisors and any statement that may have been made should not be relied upon in your decision to purchase. Certain nearby attractions referenced or identified in these materials are off-site and not controlled by the Developer. The references to nearby attractions are based upon public information sources and are believed to be accurate as of the date of these materials or publication, however, there is no guarantee that such attractions will continue to exist, or that there would not be changes and/or substitutions of any of the same. The managing entities, operators, amenities and other features that may be referred to are accurate as of the date of these materials or publication, however, there is no guarantee that the managing entities, operators, amenities and other features that may be referred to will be included at, or following, the completion of the Units. The Developer reserves the right to change any and all such managing entities, operators, amenities and other features that may be referred to as the Developer deems best for the Units in the Developer's sole and absolute discretion. Dimensions and square footage of the Units are approximate and may vary with actual construction. The Units are being developed by Beatrice Row, LLC, a Florida limited liability company ("Developer"), which has a limited right to use the trademarked names and logos used herein pursuant to a license and marketing agreement. You will look solely to Developer with respect to any and all matters relating to the sales, marketing, and development of the Units or your purchase of a Unit. No real estate broker is authorized to make any representations or other statements regarding the project, and no agreements with, deposits paid to or other arrangements made with any real estate broker are or shall be binding on the Developer. All prices are subject to change at any time and without notice, and do not include optional features or premiums for upgraded units. From time to time, price changes may have occurred that are not yet reflected on these materials or other brochures. Please check with the Developer for the most current pricing. Consult the Plans and Specifications for the site plan and the location of the Unit you desire. Unless otherwise noted, this content is owned by Developer and the unauthorized reproduction, display or other dissemination of these or other materials is strictly prohibited and constitutes copyright infringement. Unless otherwise defined, capitalized terms used herein shall have the meanings ascribed to them in the Purchase Agreement, Plans and Specifications.

SALES CENTER: 718 VALENCIA AVENUE, CORAL GABLES, FL 33134  
305 422 1249 - WWW.BILTMORESQUARE.MIAMI

Developed by



BERKSHIRE HATHAWAY  
HOLDINGS  
EWM Realty